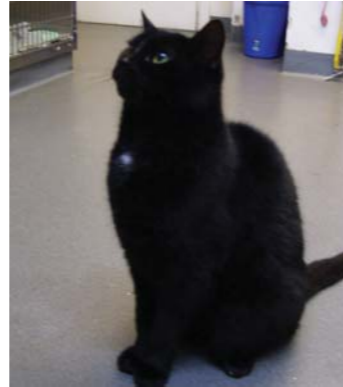


Give Cat's Protection a Helping Hand

The Cat's Protection is the UK's oldest and largest feline charity. It's devoted members work tirelessly to rescue and rehome unwanted cats and kittens. Jo Thorpe is a familiar face to many of you as one of our reception team, and is a volunteer for Cat's Protection. She has brought it to our attention that the Bournemouth and District branch of the Cat's Protection is currently under extreme pressure due to an enormous number of cats in need of homes.

We are strongly in favour of supporting the charity's valuable contribution to the welfare of these cats. If you are looking for a cat or kitten we would encourage you to consider contacting Cat's Protection in case they have your perfect partner!



Moki has been boarding at the surgery as Bournemouth Cat's Protection are so busy.



Details of cats looking for homes can be found on the Cat's Protection website:
www.bournemouthcats.org.uk

We're on the web
www.cedarvets.co.uk

Shift the Christmas Turkey!

The New Year is often a time that we feel like a new start, perhaps with a new diet to make up for the excesses of Christmas! So why not make a new start with a diet for your pet too.

Obesity is a growing problem in our pets just as in people, and studies suggest that the UK has the worst pet obesity rates in Europe. A recent study found that 50% of pets are overweight, but only 24% of owners recognise their pets as being overweight. Even more

concerning is that only 20% of pets are estimated to have regular exercise.

Our experience of patients visiting our surgery is fortunately much better than these figures, however we are still seeing an increase in obesity-related illnesses. Diabetes, arthritis and skin problems can all be exacerbated by weight gain, and there is an increased surgical risk in overweight patients.

As many of you will already know, our consulting nurses are available to offer free advice on all aspect of pet health care and are extremely enthusiastic about weight clinics for our more portly pets. Cases such as Levi (see page 2) show how rewarding it can be to put pets on a diet, although it does require hard work to achieve good results.

As part of our push on weight control in the new year we will be organising a "Shift the Christmas Turkey" charity walk to raise awareness about obesity and promote exercise as part of a healthy lifestyle. The walk will take up to forty five minutes and all participants will receive a certificate on completion.



Our healthcare nurses will be available on the day taking part and offering advice. Entry will involve a minimum donation of £2.00 and all proceeds will go to Happy Dogs, the locally run charity for dogs founded by Lyn Williams.

More information regarding the charity walk will be available in all of our branches in the new year.



Cedar Snippets



THE NEWSLETTER OF CEDAR VETERINARY GROUP

WINTER ISSUE 2007/2008

SURGERY OPENING TIMES

All surgeries run by appointment only

RINGWOOD

01425 473683
Mon-Fri 8am to 6.30pm
Sat 8am to 5pm

VERWOOD

01202 825217
Mon-Tues 8.30 to 7pm
Wed-Thurs 8.30 to 6pm
Fri 8.30 to 6.30pm
Sat 8.30 to 12.30

FERNDOWN

01202 861622
Mon-Fri 8.30 to 6pm
(closed 1 to 2pm)
Sat 8.30 to 10.30am

CANINE CARE CENTRE

01425 480721
Tues-Fri 9am to 4pm
Sat 9am to 1pm
Mon & Sun Closed

EMERGENCIES OUT OF HOURS

01425 473683
Out of hours emergencies will usually be seen at our Ringwood Hospital. Please phone first.

The Grape Escape!

It is a common misconception that grapes make a tasty treat to reward your dog during training. In fact these innocent fruits are potentially fatal if eaten in large quantities.

Dogs appear to be the only species affected badly by grapes, and some dogs are more sensitive than others. Although the exact mechanism of the poisoning remains unclear, the common outcome is severe and sometimes irreparable damage to the kidneys.

Vomiting is often the first signs of toxicity, and usually occurs within two hours. Diarrhoea, lethargy and excessive drinking can follow, but the evidence of kidney damage does not usually show until at least twenty-four hours after exposure. Therefore if you think your pet may have eaten a large quantity of grapes it is important to contact us quickly. In this way if the amount is considered dangerous we can stimulate your pet to be sick which may avert a disaster. Of course we can also provide emergency supportive care should the need arise.



Remember that this applies to raisins as well as grapes, hence with the festive season approaching it is important to keep Christmas cakes well out of reach of your pets.

This tasty looking Christmas cake is packed full of raisins and needs to be kept firmly out of reach of inquisitive canine noses!

As Christmas approaches make sure you have remembered any last minute requirements for your pet.

A full list of Christmas opening times can be found inside as well as the usual practice news and information.

We'd all like to wish you a Merry Christmas and a very Happy New Year.

Has Your Pet Eaten Something Dangerous?

If you are concerned your pet may have eaten something they shouldn't have, there are some simple guidelines you can follow to ensure we can help you as soon as possible:

- Don't wait and see what happens - contact us quickly. We can either reassure you or if necessary we can contact the Veterinary Poison's Information Service to get useful advice.
- Make a note of how long ago the substance was eaten and try to estimate the quantity accurately.
- If it was in a packet, check the ingredients and have this to hand.





Kennel Cough - The Facts

Infectious bronchitis is a contagious respiratory tract infection of dogs. It passes quickly between animals in close proximity, such as kennels and shows (hence the common term "kennel cough"). There has been a particularly bad outbreak in the area this autumn and we are keen to raise awareness to try and limit such outbreaks in the future.

Like human coughs and colds, there are a number of different bacteria and viruses which cause the infection, and they may occur in combination. This means that every outbreak can be different in severity and range of symptoms. Sometimes dogs can just have snuffly noses whereas other times severe pneumonia can lead to respiratory distress. The common feature is usually a hacking cough which usually starts with retching. This can be easily mistaken for something stuck in the throat or trying to be sick.

The best way to avoid this distressing condition is by avoiding contact with infected dogs. Of course this is not always possible, so it is important to consider vaccination. Some of the bugs involved in the kennel cough syndrome are covered by the routine annual vaccinations, but one which is not is Bordetella bronchiseptica, a relative of human whooping cough. There is a specific vaccine for this infection which is given intra-nasally. The vaccine lasts for a year and can be safely given at the same time as the routine annual vaccinations.

If your pet catches kennel cough, you should keep them away from other dogs until coughing has stopped. If you are bringing a coughing dog to us, please keep him in the car until we are ready to see you. Finally, consider routine vaccination, especially if your dog regularly visits kennels, shows or training classes.

Ever Decreasing Circles...



Earlier this year Levi weighed 50% more than a typical Border Collie and found even the shortest walk exhausting.

Levi is a seven-year old Border Collie who was taken on by his current owner in June of this year. He was extremely unfit and weighed 41.3kg as a result of a sedentary and food orientated life-style!

Levi's new owners, Mr and Mrs Gill, enjoy walking and immediately realised Levi did too. They found he loved to chase a ball but did not have the energy to continue for long. Levi was brought to us for a general health check, and then went to see Justine our healthcare nurse. Justine designed a weight reduction programme using Royal Canin Waltham prescription Obesity diet as a mixture of tinned food and biscuits. This together with increasing exercise is helping Levi to lose weight fast.

At the end of November he weighed in at 32.5kg., amounting to 8.8kg or 20% of his body weight lost in five months. He now has a clearly defined waist and is losing fat from his chest and shoulders. Justine estimates he has approximately 3kg still to lose before reaching his target weight of 29-30kg.

We would like to congratulate both Levi and his owners, as well as Justine for restoring the excellent quality of life expected of such an active breed of dog.

Levi is coming in for regular weight checks, and is certainly feeling all the better for his new active lifestyle!



Christmas and New Year Opening Times

We will be providing the usual twenty-four hour emergency service over Christmas and New Year with the duty vets and nurses available to see emergencies at our Ringwood hospital. Please ring on the normal number when the surgeries are stated closed. Otherwise surgeries will be open for appointments as follows:

- ▶ Saturday 22nd December: all branches open as usual.
- ▶ Sunday 23rd December: Closed.
- ▶ Monday 24th December (Christmas Eve): morning consultations at Ringwood only by appointment
- ▶ Tuesday 25th December (Christmas Day) and Wednesday 26th December (Boxing Day): Closed.
- ▶ Thursday 27th –Saturday 29th December: all branches open as usual.
- ▶ Monday 31st December (New Year's Eve): all branches open as usual.
- ▶ Tuesday 1st January (New Year's Day): Closed.
- ▶ Wednesday 2nd January onwards: all branches return to normal opening times

Benson's Story

Benson is an eleven-year old Weimeraner dog who spent rather a lot of time in our hospital this autumn. At the beginning of September he came to see us with a nasty bout of diarrhoea with some bleeding and a very painful abdomen. With initial symptomatic treatment Benson seemed better for a while, but a couple of weeks later he was back again, feeling even worse.

Benson came in as an emergency late one evening, and Nick admitted him to the hospital immediately. Blood tests showed he was very anaemic, as his body was now attacking and destroying his own red blood cells. Nick immediately started him on steroid treatment to combat the anaemia whilst he tried to find out what had caused it.

Over the next few days almost all of our vets were involved in helping the investigation. Xrays, ultrasound and finally looking into the stomach with an endoscope showed there was something abnormal in the stomach which meant Benson needed an operation. He was still dangerously anaemic so a blood transfusion was arranged as soon as possible. Mr and Mrs Rose kindly arrived with their German Shepherd Dog Solo to give blood. Benson then underwent exploratory surgery, where a large knot of plant material and debris was removed from his stomach.

It may seem as though Benson had already been unlucky, but on further examination a growth was discovered blocking his small intestine. A whole section of intestine had to be removed to allow his digestive system to function again. Benson remained in the hospital for several days post-operatively to receive round-the-clock nursing care, pain killers and antibiotics. The steroid therapy Benson was receiving to control the anaemia meant there was a risk of poor healing, but thankfully Benson fought strongly and recovered well. The growth was analysed at the laboratory and was found not to be cancerous so should not recur in the future.

Two weeks after he was admitted, Benson finally went home. He made an amazing recovery over the following few weeks and now is back to his normal self, having finished almost all of his medication. We are all relieved to see him back on form and wish him and his owner Mr Johnson all the best.



We are delighted to see Benson back to his old self and enjoying life once more..